

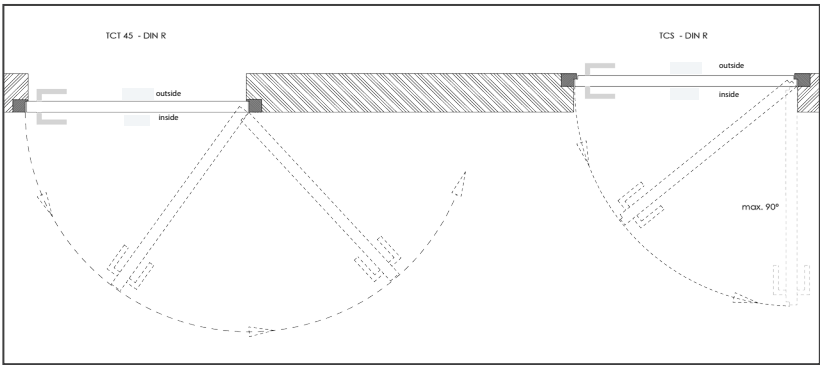
# TCS 45 & TCT

To define the opening direction

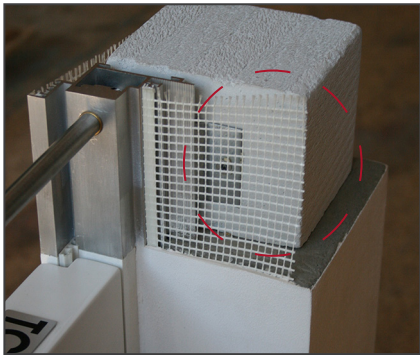
Lebo offers two distinctive systems on your decision to which side the door should open.

With the TCS 45 system the door opens inwards, while with the TCT system the door opens outwards.

As both systems when closed have the same look, it is easy to combine them as per room situation or the wishes of the builder/owner.

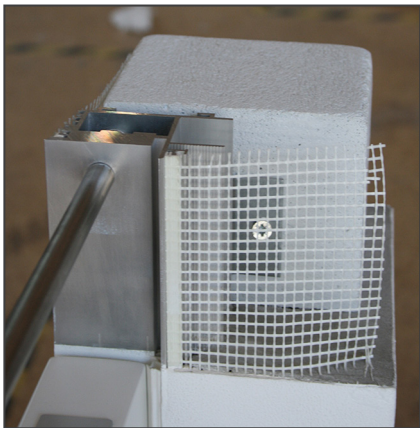


Definition opening side



System TCS 45

The flexible net clipped in the frame eliminates the risk of plaster cracks.



System TCT

# LEBO – a strong partner

with a clear and wide assortment

- > White & coloured lacquer collection
- > CPL & décor collection
- > Wood & Wood-Design collection
- > Wood-Glass & Glass collection

- > Functional doors
- > Sidelight & top light door elements
- > Accessories (frames, glazing, hinges, etc.)

Our sales team will be pleased to provide you with details. Or just check our web site: [www.lebo.de](http://www.lebo.de)

# LEBOdoors



# LEBOdoors

Your life. Your door.

**Lebo GmbH**  
Händlerstraße 15  
46395 Bocholt  
Germany  
Tel.: +49 2871 9503-0  
Fax: +49 2871 9503-109  
email: [mail@lebo.de](mailto:mail@lebo.de)  
[www.lebo.de](http://www.lebo.de)

YOUR SPECIALIST

# Düsseldorf

The new door series  
by LEBO

Information & Details

Your life. Your door.



## Series Düsseldorf

For lovers of modern design

For lovers of modern and clean design, we have developed the series Düsseldorf. Besides the very clear expression of forms, this series convinces with a very well-thought out construction: wall and door leaf attach to each other by appearing flush, while the construction of the frame stays invisible. To achieve a complete look, the skirtings can as well be installed flush to the wall.

The result is a high-quality element which fits perfectly into a contemporary surrounding that is focussed on selected materials.

### The advantages of Series Düsseldorf:

- › high quality materials
- › flush design
- › invisible frame construction
- › flush skirting board possible
- › clean design
- › both opening directions possible



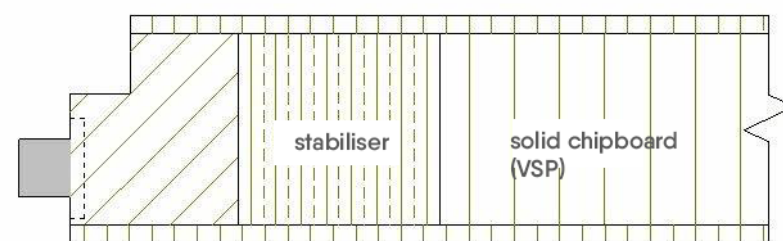
## The Door leaf

For **sytem TCS 45** the door leaf is rebated to the frame and opens outwards. All edges are squared.

The door leaf has a thickness of 45mm with a solid chipboard core, optionally with upright stabiliser.

Maximum nominal door size is 1100mm in width and 2500mm in height.

The door leaf is available in Lebolit CPL, wood veneer, white and colour lacquers. Please check our catalogue or web site for a full overview.



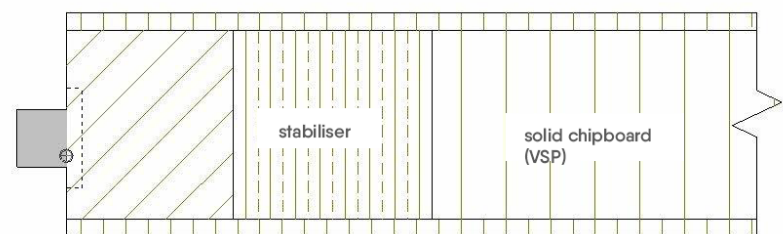
Cross view door leaf TCS 45

For **sytem TCT** the door leaf is unrebated and opens inwards. All edges are squared.

The door leaf has a thickness of 45mm with a solid chipboard core, optionally with upright stabiliser.

Maximum nominal door size is 1100mm in width and 2500mm in height.

The door leaf is available in Lebolit CPL, wood veneer, white and colour lacquers. Please check our catalogue or web site for a full overview.



Cross view door leaf TCT

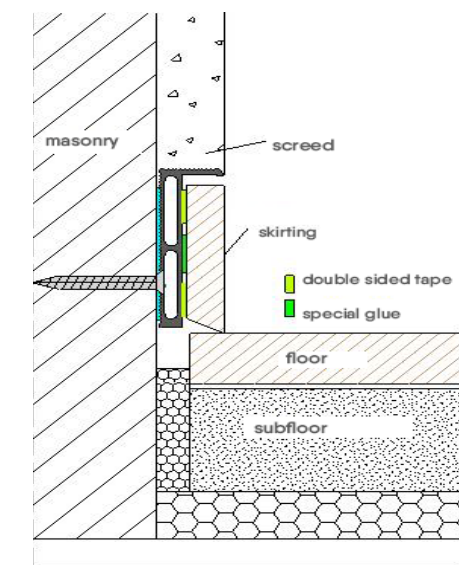
## The Skirting Boards

Flush-to-the wall matching the door

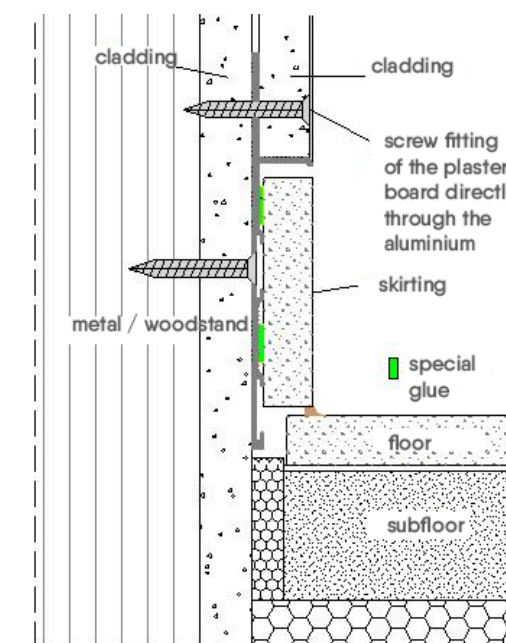
For both systems, **TCS 45** and **TCT**, we offer the skirting board systems

„**Light 46**“ for wooden skirtings and „**C70**“ for tiles.

Both skirting board sytems are available for solid and dry wall constructions.



Skirting board Light 46 in solid construction



Skirting board C70 in dry-wall construction

### Available profiles

